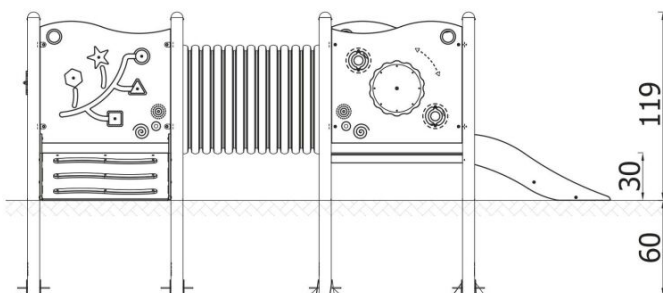
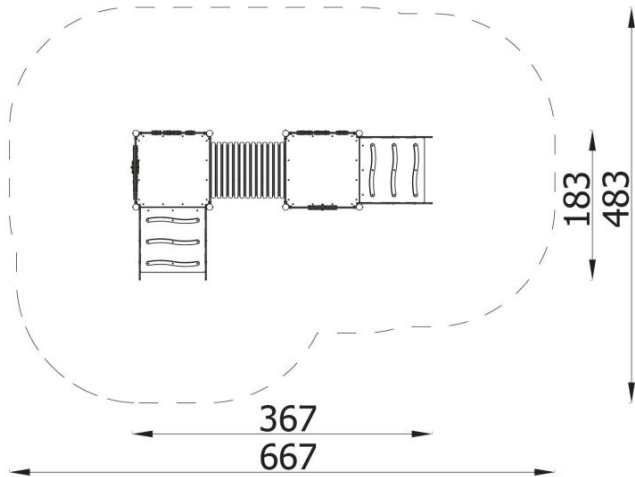
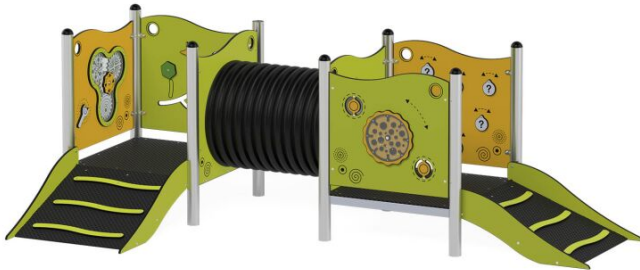


### BESCHREIBUNG

The 6503 set is a real treat for little explorers. It features an interesting, easy-to-navigate entrance in the form of a ramp, a tunnel, and a small slide as the culmination of the adventure. The manipulative panels encourage play and discovering the world through experience. Construction: load-bearing posts made from stainless steel pipes with a diameter of 76.1 mm.

Anchoring: directly in the ground. Roofs and safety panels: panels made from flexible high-pressure polyethylene HDPE (15 mm). Steel components: fittings and connectors made from stainless steel.



### INFORMATIONEN

Anzahl der Nutzer	10
Altersspanne	
Geräteabmessungen (m)	1,83 x 1,19 x 3,67
Entsprechend der Norm	
Ersatzteile	

### FALLSCHUTZ

Bereich	Max. freie Fallhöhe (m)	Fläche [m <sup>2</sup> ]	Umfang des Sicherheitsfreiraum (m)
A			
B			
C			