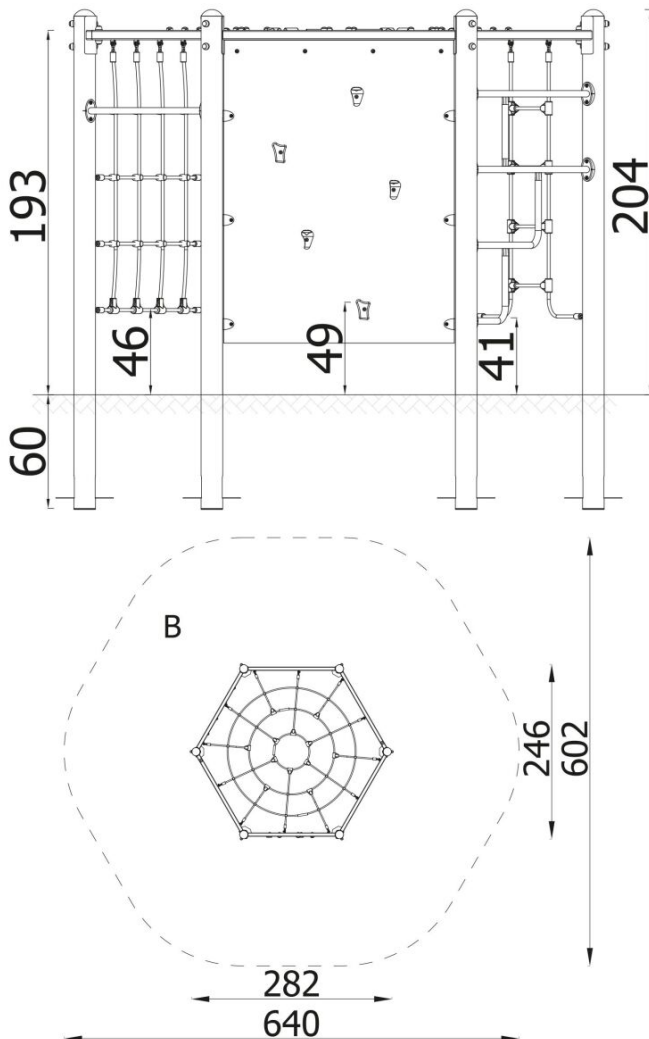
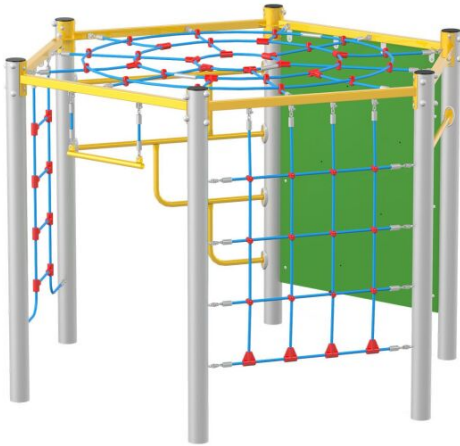


Spider Climbing Hexagon 4226MP

BESCHREIBUNG

Climbing device which children are eager to use during playing. Overcoming the device and attempting to move from one side to another activate child's motor development, muscle performance and strength. The ladder is perfect for school and local playgrounds.



INFORMATIONEN

Anzahl der Nutzer	12
Altersspanne	3 - 14
Geräteabmessungen (m)	2.82 x 2.04 x 2.46
Entsprechend der Norm	EN-1176-1:2017-12
Ersatzteile	

FALLSCHUTZ

Bereich	Max. freie Fallhöhe (m)	Fläche [m ²]	Umfang des Sicherheitsfreiraum (m)
A			20
B	1.93	30.5	
C			